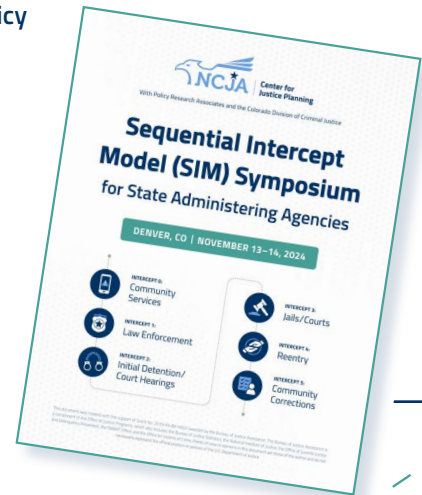


Sequential Intercept Model (SIM) Symposium: Supporting the Nexus of Public Safety, Crisis Response & Behavioral Health

In November 2024, the NCJA Center for Justice Planning, in partnership with Policy Research Associates (PRA) and the Colorado Division of Criminal Justice (CDCJ), hosted the Sequential Intercept Model (SIM) Symposium in Denver, Colorado.

The SIM is a practical model that maps out six points in the criminal justice system ranging from community services to community corrections. This model is now widely used as a strategic tool policymakers and criminal justice planners can use to identify key points for intercepting and linking individuals with behavioral health treatment services to prevent further criminal justice involvement.



PARTICIPANTS

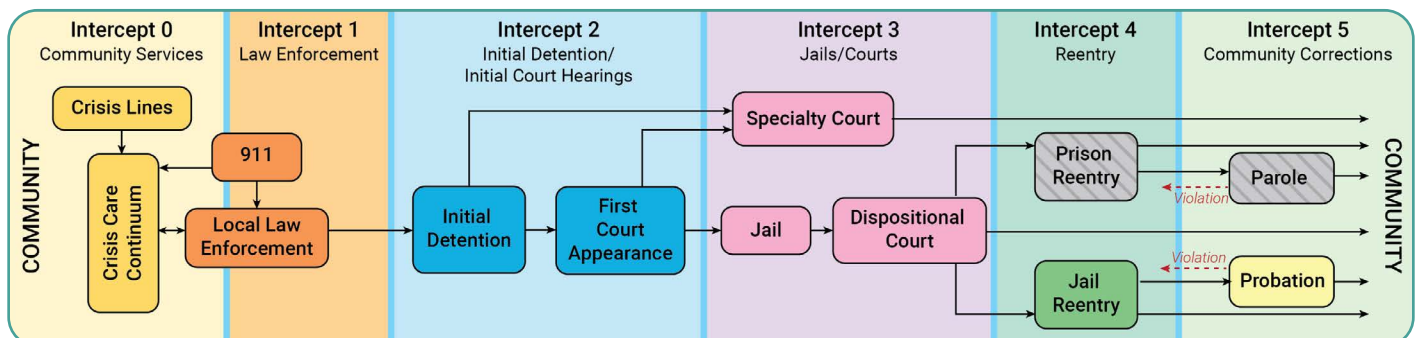
The Symposium was attended by 51 participants, representing 14 different states and the District of Columbia. **Participants included:**

- State Administering Agency (SAA) directors and leadership
- SAA program managers and staff, representing Byrne JAG, Byrne SCIP and other programs
- Practitioners and subject matter experts in behavioral health, substance use, court programs and violence intervention efforts

PRESENTERS & SUBJECT MATTER EXPERTS

Key presenters and facilitators throughout the Symposium included:

- Policy Research Associates (PRA)** leadership and staff:
 - Travis Parker, *Vice President, PRA*; Dan Abreu, *PRA*; Regi Heurter, *PRA*; Brian Peete, *PRA*
- Dr. Abigail Tucker, *Psy.D, SHE Consulting*
- Laura Usher, *Laura Usher Consulting*



Abreu, D., Parker, T.W., Noether, C.D., Steadman, H.J., & Case, B. (2017) Revising the paradigm for jail diversion for people with mental and substance use disorders: Intercept 0. *Behavioral Sciences & the Law*, 35 (5-6), 380-395. <http://doi.org/10.1002/bsl.2300> © 2021 Policy Research Associates, Inc.

KEY CONTENT

During the day-and-a-half Symposium, participants engaged in presentations and breakout discussions.

Key content included:

- **History and overview of the SIM & SIM in practice:** Representatives from Maryland shared insights about SIM implementation across the state.
- **Local Colorado highlights:** Colorado SAA Director Dr. Matt Lunn and staff shared highlights of programs in Colorado that are utilizing components of the SIM.
- **NCJA Supporting Behavioral Health and Crisis Response Initiatives Innovation Lab overview:** Innovation lab participants and staff shared their innovation lab experiences and key takeaways.
- **Subject focused breakout discussions:** Topics included workforce development, collaboration and breaking down silos, data and evaluation and rural communities.
- **Strategies for collaborative stakeholder engagement across system and community partners**
- **Utilizing the SIM as a strategic planning tool**
- **Breakout discussions and development of key takeaways and next steps for utilizing the SIM in your community**

SIM in Practice: Maryland Case Study

After PRA experts provided an overview of SIM principles and key concepts, Symposium participants heard from several representatives from Maryland who spoke about their state's utilization of SIM. Maryland maintains and regularly updates a strategic plan, and hosts an annual SIM Summit. A dashboard of SIM mapping by county is available [here](#).

Panel highlights included:

Facilitating Communication

There are often many resources available for individuals involved in the criminal justice system, however there is frequently a lack of awareness surrounding availability and location of resources; SIM mapping helps facilitate communication between agencies and systems, allowing communities to leverage and coordinate services, plan additional efforts and identify gaps in necessary resources.

Turning Data into Action

Measuring impact is critical; when data is collected and analyzed, SIM mapping helps identify what is being done well and opportunities for improvement across demographic and geographic indicators.

Increasing Collaboration Across Systems and Peers

Utilizing peer support can break down barriers and build relationships. SIM mapping can enable local and state agencies to better coordinate efforts, utilize peer support across related programs and avoid duplication of work.



Panelists from Maryland, moderated by PRA, discuss the implementation of SIM across the state.

Local Highlights: Colorado Programs Spotlight

The Colorado Division of Criminal Justice (CDCJ) serves as the State Administering Agency (SAA) responsible for administering many federal and state grant programs and efforts.

Representatives from several key offices and programs in Colorado shared the following insights about programming and funding in the behavioral health and crisis intervention domains:

- Colorado has utilized Byrne State Crisis Intervention Program ([Byrne SCIP](#)) funding to establish and build out specialty courts; in addition, the CDCJ is working to expand access to funding through simplifying grant application processes and conducting outreach to prospective Community Based Organization (CBO) applicants.
- Using federal funding, Colorado created several free behavioral health training sessions focusing on 988 resources and managing mental health and wellbeing while working in crisis.
- In victim services, Colorado created a 28-member board with one simplified funding application process; application questions have been streamlined and tailored to reduce barriers for CBOs applying for funding.
- Representation matters! It is critical to have representatives from all communities, including tribal communities, involved in strategic planning, programming and funding processes.



Representatives from the Colorado Division of Criminal Justice discuss local behavioral health and crisis intervention programming.

Report Out:

NCJA Supporting Behavioral Health & Crisis Response Initiatives Innovation Lab

Through NCJA's Innovation Labs, SAAs engage in peer-to-peer learning in small cohorts focused on an identified area of need. Labs include SAA representatives, NCJA staff and subject matter experts. At the Symposium, lab participants, led by Simone Greene, deputy director of the NCJA Center for Justice Planning, presented an overview of the recent Innovation Lab process and content, including key takeaways and recommendations.

Key recommendations include:

- **Start with WHY:** Understand the 'why' both internally and externally; set a clear vision and review it often
- **Learn:** Understand the current behavioral health landscape nationally and statewide
- **Communicate:** Create clear definitions and use approachable language to facilitate conversations about programming and funding
- **Convene:** Engage stakeholders, creatively market funding opportunities, and build relationships intentionally and strategically

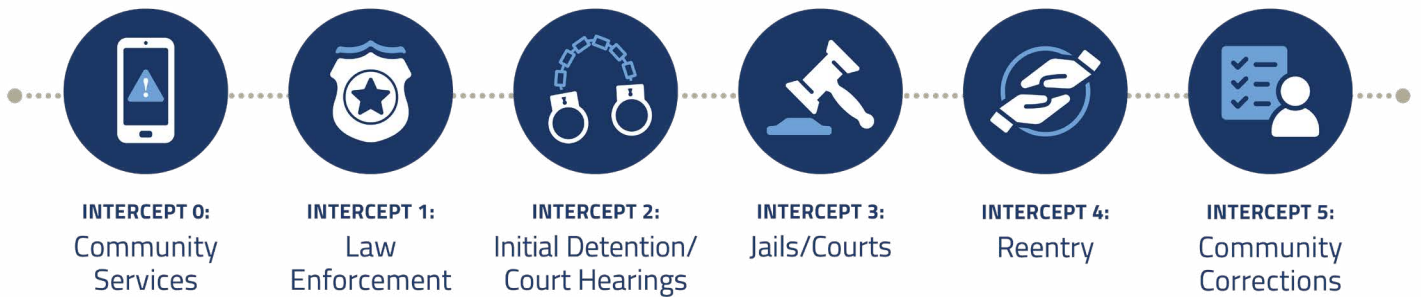


Scan to access the
[final report.](#)

SIM as a Strategic Planning Tool

The SIM is most effective when used as a community strategic planning tool to assess available resources, determine gaps in services and plan for community change. These activities are most effective when conducted by a collaborative team of cross-sector stakeholders that represent multiple systems, including behavioral health, substance use, law enforcement, court and community corrections staff, social services, people with lived experience, family members and others. **Communities can utilize the SIM to uniquely address challenges and achieve the following:**

- Develop a comprehensive picture of how individuals with behavioral health issues and substance use disorders flow through the criminal justice system, along **six distinct intercept points:**



- Identify gaps, resources and opportunities within each intercept for individuals with behavioral health issues and substance use concerns.
- Develop priorities for action designed to improve system and service delivery responses.

Utilizing the SIM in Your Community: Strategies for Collaborative Stakeholder Engagement

Collaborative stakeholder engagement is a critical component of SIM mapping. Building meaningful relationships can lead to better solutions, avoiding duplication of efforts and helping comprehensively leverage resources in your community. **Key benefits of convening stakeholders include:**

- **Breaking down silos:** this helps to remove barriers between groups and systems, increase communication and build collaboration
- **Improving processes:** engaging multidisciplinary stakeholders that represent multiple groups and interests allows a more comprehensive approach to system change – it becomes easier to identify successes and areas of growth and improvement
- **Increasing access:** whether it's knowledge of funding opportunities and processes, or data sharing for better coordination, stakeholder engagement will increase access to resources, policy processes, and funding opportunities

Building and sustaining relationships is hard, ongoing work — **but you can't do it alone!** Partnering across systems through collaborative stakeholder engagement creates collective ownership and increased buy-in.

PRO TIPS!

PRA encourages utilization of SIM for strategic planning, with an emphasis on the following:

- Use the model as a framework to guide discussions
- Inventory each intercept:
 - » **What is available?**
 - » **What is working?**
 - » **What could work better?**
- Identify critical stakeholders who need to be involved
- Gather data and ask questions
- Create clearly defined action plans
- Proactively identify challenges/ barriers and develop solutions



Breakout Groups and Peer to Peer Learning

Symposium participants had multiple opportunities to break into subject focused groups for in depth learning with peers and subject matter experts.

Participants actively engaged in planning activities and discussions identifying challenges and opportunities related to the following topics:

- **Workforce challenges and solutions** for behavioral health, law enforcement and others
- **Coordination and breaking down silos across systems:** engaging government partners, CBOs, service providers and others
- **Rural communities:** unique challenges in service access and delivery
- **Data collection and evaluation:** understanding what data is needed for data driven decision making, how to track outcomes and communicate impact



TOP: Attendees discuss with their peers in a small group facilitated by Laura Usher and Dr. Abigail Tucker.

BOTTOM: Led by PRA's Brian Peete and Dan Abreu, attendees learn from their peers in a small group.

NEXT STEPS

The NCJA Center for Justice Planning will continue to work with PRA and other subject matter experts to identify opportunities for SAAs to utilize SIM Mapping in their states and communities.

For more information on the SIM or to learn about upcoming opportunities to further explore SIM mapping, please contact strategicplanning@ncja.org.



**Center for
Justice Planning**

Learn about our variety of trainings at [NCJA.org/Strategic-Planning](https://www.ncja.org/Strategic-Planning)

This document was created with the support of Grant No. 2019-YA-BX-K002 awarded by the Bureau of Justice Assistance. The Bureau of Justice Assistance is a program office within the Office of Justice Programs, which also includes the Bureau of Justice Statistics, the National Institute of Justice, the Office of Juvenile Justice and Delinquency Prevention, the Office of Sex Offender Sentencing, Monitoring, Apprehending, Registering, and Tracking, and the Office for Victims of Crime. Points of view or opinions in this document are those of the author and do not necessarily represent the official position or policies of the U.S. Department of Justice.

LAST UPDATED 02/25